



INDOFINE Chemical Company, Inc.

121 Stryker Lane, Bldg. 30, Suite 1 • Hillsborough, NJ 08844 • U.S.A.

Phone: (908) 359-6778 • FAX: (908) 359-1179

website: www.indofinechemical.com

e-mail: chemical@indofinechemical.com

CERTIFICATE OF ANALYSIS

Catalog Number: **17-105**

Product Name: **6,4'-DICHLOROFLAVONE**

CAS Number: [36768-56-6]

Lot Number: 97080

Chemical Formula: $C_{15}H_8Cl_2O_2$

Molecular Weight: 291.14

Melting Point: 239-240°C

Appearance: Off white powder

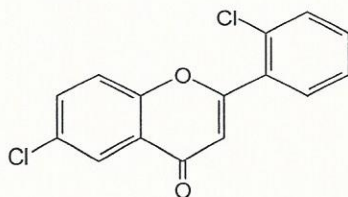
Solubility: Soluble in Chloroform

TLC: n-Hexane : Ethyl acetate (1:1)

NMR Spectrum: Enclosed (Conforms to the structure)

Storage: Store in a cool, dry place

Purity (HPLC): 99.68%





INDOFINE Chemical Company, Inc.

121 Stryker Lane, Bldg. 30, Suite 1 • Hillsborough, NJ 08844 • U.S.A.

Phone: (908) 359-6778 • FAX: (908) 359-1179

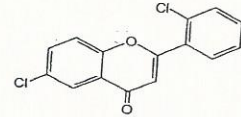
website: www.indofinechemical.com

e-mail: chemical@indofinechemical.com

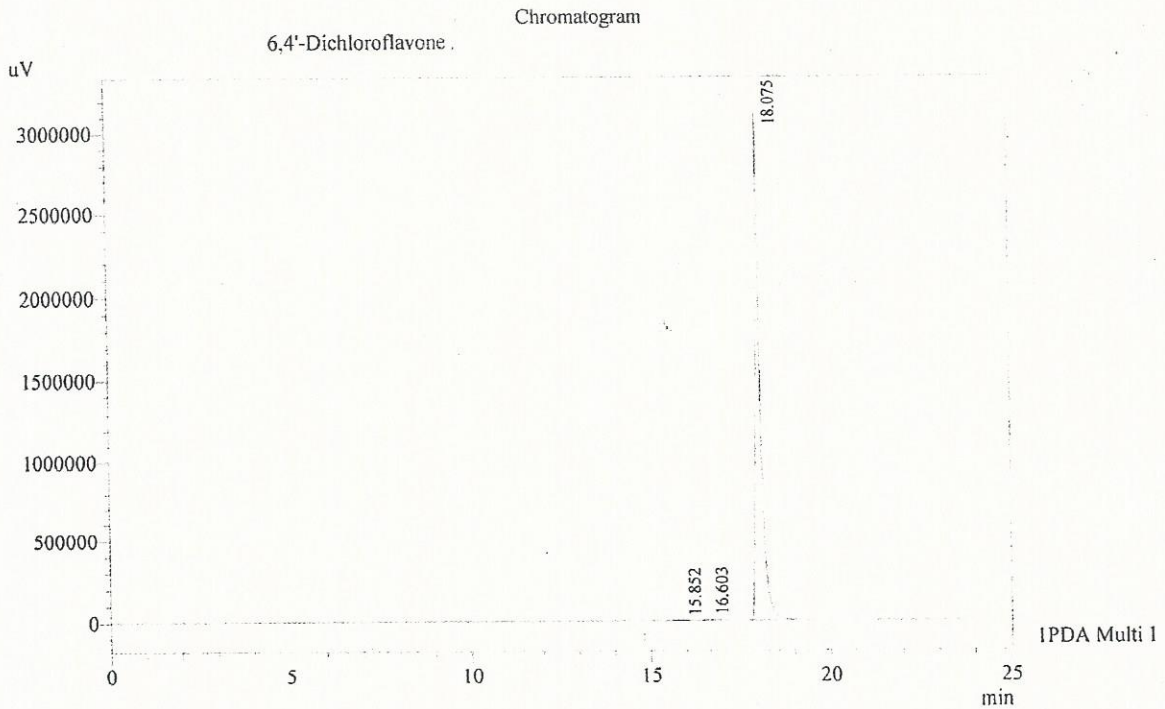
HPLC ANALYSIS

Acquired by : Admin
Sample Name : 6,4'-Dichloroflavone
Sample ID : Lot No:97080
Injection Volume : 20 uL
Data Filename : 291015F.lcd
Method Filename : Linear Gradient.M.lcm

Catalog No.: 17-105
Product Name: 6,4'-Dichloroflavone
Lot No.: 97080



Column : Gemini C-18(2), (250mm x4.6mm 5.0μ)
Flow : 1.000 mL/min.
Mobile Phase : A(0.05% TFA in water) B(Acetonitrile)
0.01 90 10
12.0 10 90
20.0 10 90
23.0 90 10
25.0 90 10



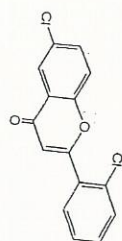
I PDA Multi 1 / 254nm 4nm

PeakTable

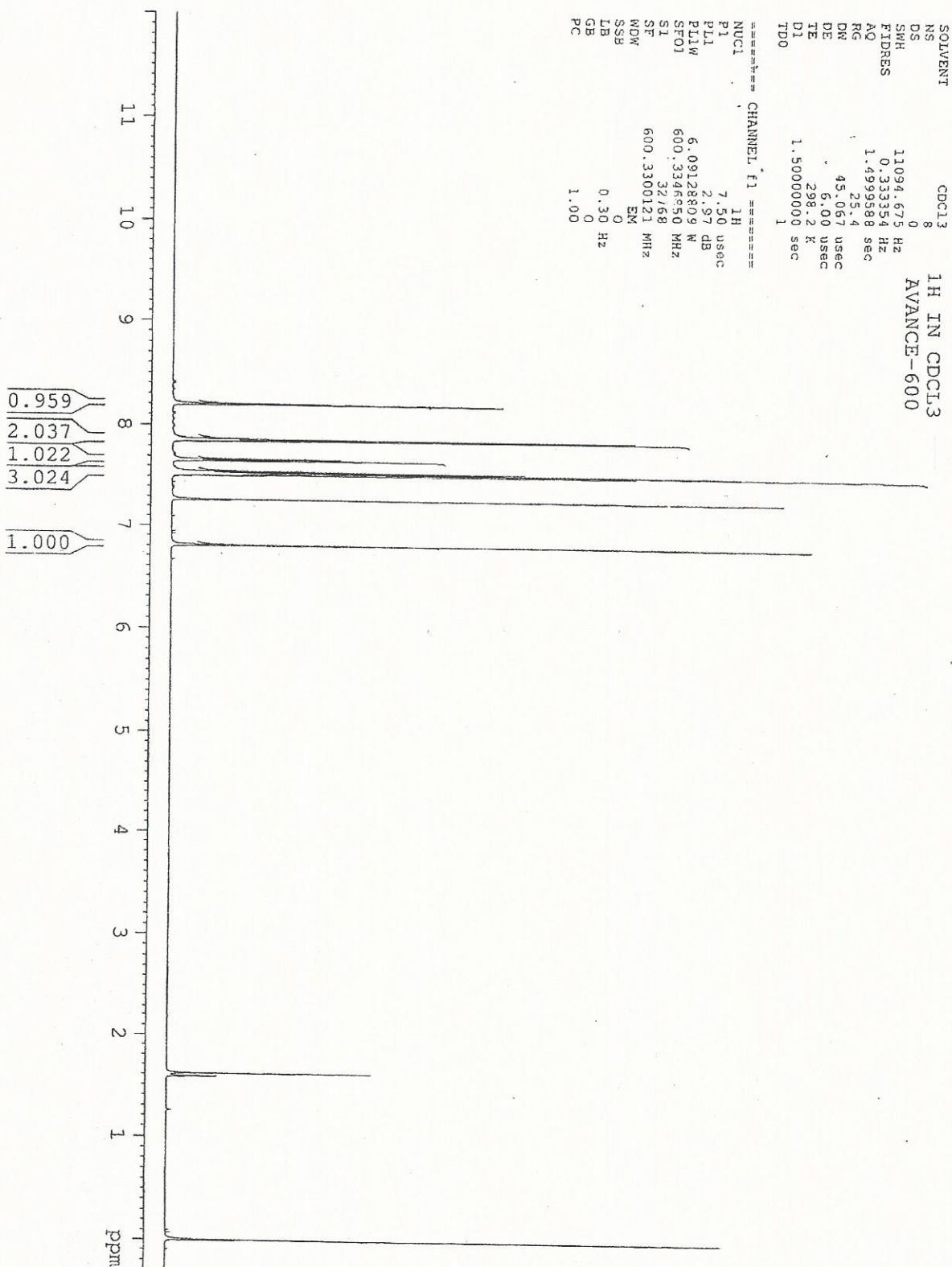
Peak#	Name	Ret. Time	Area	Area %	Relative Retention Time
1	RT:15.852	15.852	38009	0.13	0.88
2	RT:16.603	16.603	54823	0.19	0.92
3	6,4'-Dichloroflavone	18.075	28629367	99.68	1.00
Total			28722199	100.00	



INDOFINE Chemical Company, Inc.
121 STRYKER LANE
BLDG. 30, SUITE 1
HILLSBOROUGH, NJ 08844



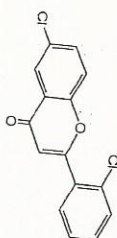
Catalog No.: 17-105
Product Name: 6,4'-Dichloroflavone
Lot No.: 97080





INDOFINE Chemical Company, Inc.
121 STRYKER LANE
BLDG. 30, SUITE 1
HILLSBOROUGH, NJ 08844

Catalog No.: 17-105
Product Name: 6,4'-Dichloroflavone
Lot No.: 97080



SOLVENT CDCl3
NS 8
DS 0
SMH 11094.675 Hz
FIDRES 0.333354 Hz
AQ 1.4999588 sec
RG 25.4
DW 45.067 usec
DE 6.00 usec
TE 298.2 K
D1 1.50000000 sec
TD0 1

1H IN CDCl3
AVANCE-600

===== CHANNEL F1 =====
NUC1 1H
P1 7.50 usec
PL1 2.97 dB
PL1W 6.09128609 W
SFO1 600.3346850 MHz
SI 32768
SF 600.3300121 MHz
WDW EM
SSB 0
LB 0.30 Hz
GB 0
PC 1.00

